

SPATIAL TAPESTRY



www.SpatialTapestry.com

Map Production with Map Manager

Many organizations need to produce maps, in both paper and .PDF form, from hundreds of vector layers quickly and easily, without being troubled by cartographic nuances.

When the map production occurs within a single GIS group the resources can become stretched with minor variations of a standard map or with the sheer volume of a Map Series production run.

GIS software often lacks administration features such as the ability to allow tracking of what maps have been produced, and often do not include the tailored legends, templates and styles built into Map Manager.

Customized map production solutions implemented in the incumbent GIS often lack central administration features, and may need re-implementation in subsequent GIS software releases. Further, security features that control which users have viewing and editing rights are often missed or poorly implemented.

Map production generally leads to difficulty with;

- Cartographic quality Map Series Production
- Centralized Corporate/Custodian administration
- Increased network traffic and timeliness
- Lack of confidence for all involved.

Map Manager solves the Map Production Problem

Map Manager brings cartographers and IT administrators together to provide custom security access to individual spatial themes each presented with the flair that only cartographers have.

Operators at the front desk can work with a quality GIS viewer, and generate a paper/PDF map as required. Specialist Map Series production becomes highly automated.

“IntraGIS (Map Manager) allows us to produce 1000 production quality maps per week without needing a GIS Specialist.” – Luke Ellis, GIS Manager, Forestry Tasmania

Results

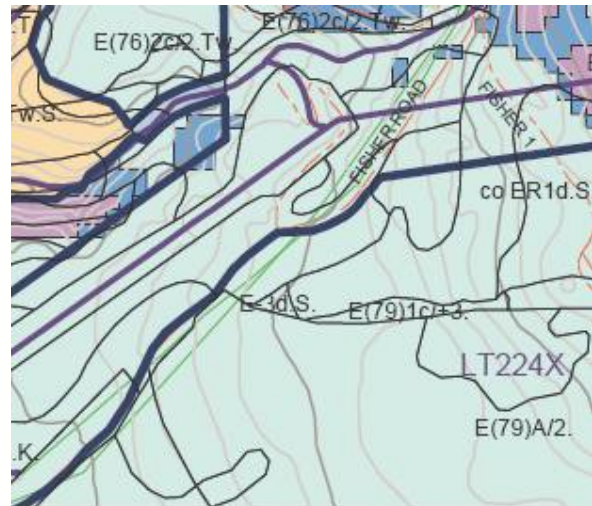
- Cost-savings and improved confidence
- A 50 times performance gain over manual processes
- Morale is boosted and staff freed up to focus on other productive business projects.

- Local Government
- Forestry, Parks & Wildlife
- State Planning Departments
- National Mapping Agencies

Spatial Tapestry provides GIS technicians a richly functioned COTS GIS Browser and Map Production application.

By storing spatial data in SQL Server 2008 and pre-fabricating theme presentation, map templates, legends and styles the efficient (re)production of individual maps and map series is assured.

The use of Map Manager and SQL Server 2008 insulates GIS sections from costly upgrades as technologies evolve.



Transend Transmission Lines	Inaccessible	Streamside re
Significant all weather 2 lane feeder road	Unloggable	Uneconomic
Single lane all weather minor road	MDC protection	Not managed
Vehicular access track	Non commercial	0 - 29 per oer

SOFTWARE FEATURES

Robust

Map Manager delivers unrivalled sophistication and reliability with:

- Smart Legends, only listing visible themes
- Intelligent ordering and transparent overlay
- “Industry strength” software, access levels, etc
- Centralized administration/cartographic quality
- No outstanding bugs with any of our customers

Map Manager has been running in several large production environments since 2000.

Flexible

- Map Manager can source spatial data from **SQL Server 2008**, MapInfo, ESRI Shape, Oracle Spatial and ECW formats.
- Map Manager can relate to business data in any database via an ODBC driver.
- Map Manager has been developed for Vista, XP, Windows 2000 and Windows 2003 Server.

Scalable

Map Manager can:

- work with local government to national datasets
- supports 60+ simultaneous viewers/map users
- work alone with a single operator or as part of a large map team in an enterprise GIS environment.

Automated

- Location finding via parcel/road/etc identifiers
- Map Series Production – zoom to subsequent suburb and plot to fixed/automated scales

Supported & Enhanced

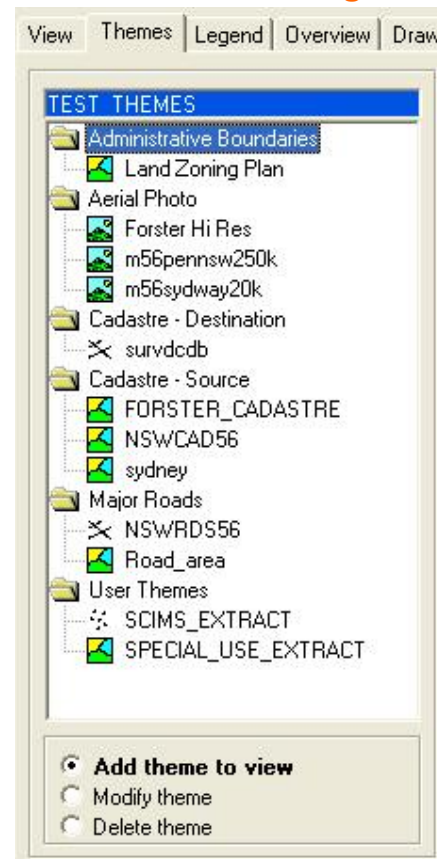
Map Manager was developed by IntraGIS Systems (WA) and is supported by Spatial Tapestry. Spatial Tapestry delivers on:

- Prompt telephone and internet support
- Annual maintenance contract with software upgrades
- On-site training and implementation.

Other Features

- Map Manager is a totally tailored COTS application for easy configuration of quality maps, and provides secure viewing and map production.
- In viewer mode, compressed images are transferred across the network from the Server to the Client, greatly minimizing network load.

Flexible Theme Management



Map Manager provides a rich set of cartographic options to assist produce production quality maps from a wide range of vector and raster data.

Spatial Tapestry's Map Manager/IntraGIS users include:

- Dept Planning and Infrastructure (WA)
- Dept of Aboriginal Affairs (WA)
- Forestry Tasmania

Spatial Tapestry

Unit 16/429 The Boulevard,
Kirrawee NSW 2232 Australia

Phone: (+61 2) 8323 8730
Fax: (+61 2) 8282 5032
info@SpatialTapestry.com