

SPATIAL TAPESTRY



World Leaders in Relative Positioning

The Shifting Cadastre Problem

Local, State and Federal governments regularly improve the accuracy of the Digital Cadastre. Recipients of the cadastral updates then find that their assets and other spatial data that were positioned relative to the old cadastre are now in the wrong place.

Infrastructure owners may be tempted to delay applying the upgraded cadastre because to reposition all the assets manually is cumbersome, labour intensive and error prone. However, to delay means:

- Underground assets cannot be accurately located
- Emergency response is hindered
- Dial before you Dig responses are unreliable
- Staff and customers lose confidence in the data
- Many spatially dependant layers are left behind
- Spatial analysis can be severely affected with poor alignment
- Data cannot be shared with other organizations.

The Problem is Solved

The Spatial Adjustment Manager (SAM) automates the cumbersome process of realigning and adjusting the position of assets relative to an updated digital cadastre.

Users are confident in the currency of their data because new land parcels are implemented and the network is adjusted promptly and accurately.

“It would be impossible to realign asset network data without the software. In September 2006 the changes to the Energex land parcels meant that some 45,000 network assets points (e.g. poles) had to be re-aligned. Try doing that by hand.”

Results

- Cost-savings achieved of \$50,000 - \$250,000 per annum
- Reduced risk through minimized reliance on manual intervention
- An 18 hour manual job is now done automatically in 2 hours
- Timely adjustments with at least 98% accuracy
- Morale is boosted and staff freed up to focus on other productive business projects.

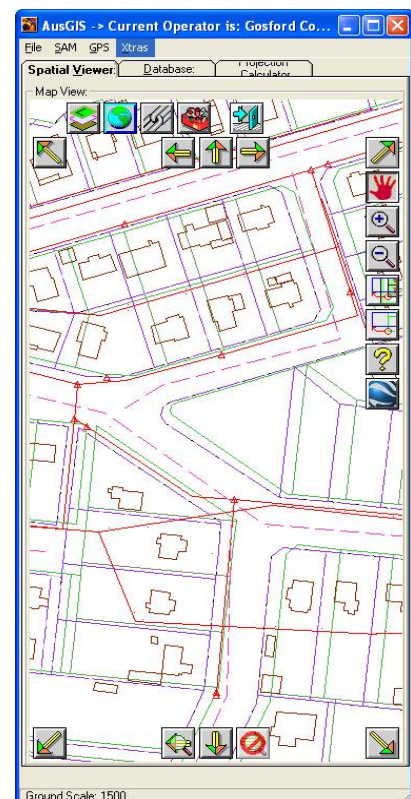
For added benefit use SAM in conjunction with Topo Manager to achieve spatial accuracy and complete vertical alignment through all layers.

Utilities

Local Government Telecommunications

Spatial Tapestry enables infrastructure owners to improve the accuracy of their digital cadastre, the positioning of their complex infrastructure assets and other spatial layers.

Local Government can upgrade their digital Cadastre using highly accurate Ortho-photography at the same time as administration, zoning and annotation layers and field assets.



SOFTWARE FEATURES

Robust

Spatial Tapestry delivers unrivalled sophistication and reliability with;

- painless installation and operation
- “industry strength” software that has passed stringent user acceptance
- no outstanding bugs with any of our customers.

Flexible

Spatial Tapestry handles zoning layers, new sub-divisions and land releases and spatially dependent layers such as street numbers, storm-water and local roads.

Multi-platform

Operating Systems

Windows XP
Windows 2000

Geospatial

SQL Server 2008 Spatial
MapInfo
ESRI
Intergraph
FME to many formats including Smallworld and Bentley
Oracle Locator and Spatial
Postgres/PostGIS

Scalable

An adjustment can be run over a small area or hundreds of square kilometres depending on business requirements.

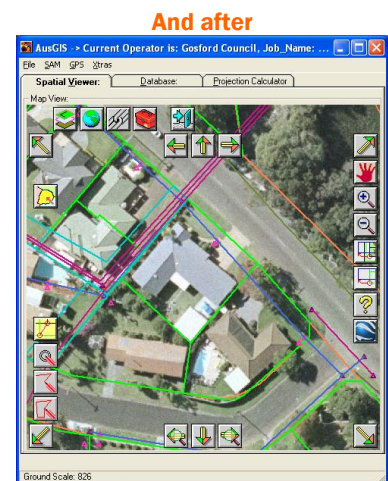
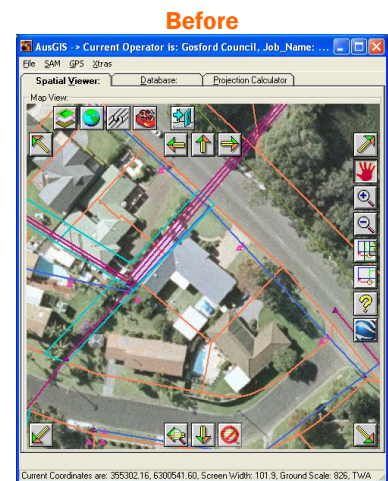
Automated

- Automated adjustments of the cadastre, spatially dependent layers and assets achieve at least 98% accuracy. The operator verifies the results using powerful and comprehensive tools
- Processing can be interactive or in batch as a one button operation.

Supported & Enhanced

The software is installed in remote sites where there is limited technical expertise and within complex IT environments.

- Prompt telephone and internet support
- Annual maintenance contract with software upgrades
- On site training and implementation.



In Production at:

Users range from Australia's largest utilities to local government and include;

- Energex (Qld)
- NT Land Information System
- Energy Australia (NSW)
- Integral Energy (NSW)
- Holroyd Council (NSW)
- Johnstone Council (Qld)
- Bowen Council (Qld)

Contract Services:

Spatial Tapestry provides fixed prices services for spatial upgrades. Contact us for a quote.

Spatial Tapestry

Unit 16/429 The Boulevard,
Kirrawee NSW 2232 Australia

Phone: (+61 2) 8323 8730

Fax: (+61 2) 8282 5032

info@SpatialTapestry.com

www.SpatialTapestry.com